

SUNDAY BLOODY SUNDAY

U2

♩ = 98 INTRO

The Intro section consists of two staves of music in 4/4 time. The first staff begins with a treble clef and a 4/4 time signature. The music features a complex rhythmic pattern with many eighth notes and rests, some marked with 'x' to indicate specific drum hits. The second staff continues this pattern with similar rhythmic complexity.

VERSE

The Verse section consists of three staves of music. The first staff shows a rhythmic pattern with eighth notes and rests. The second staff continues the pattern, featuring a double bar line with a '2' above it and a double slash below it, indicating a two-measure rest. The third staff concludes the verse with further rhythmic notation.

BRIDGE

The Bridge section consists of one staff of music. It features a rhythmic pattern with eighth notes and rests, similar to the other sections of the song.

VERSE

The second Verse section consists of two staves of music. The first staff continues the rhythmic pattern from the first verse, and the second staff concludes it with similar notation.

2 SUNDAY BLOODY SUNDAY

Musical notation for the first staff, featuring a drum set icon on the left and a double bar line with a '2' above it on the right.

CHORUS

Musical notation for the chorus section, featuring a drum set icon on the left, a double bar line with a '2' above it on the right, and a circled phi symbol on the far right.

Musical notation for the second staff, featuring a drum set icon on the left.

Musical notation for the third staff, featuring a drum set icon on the left, a circled phi symbol above the staff, and a double bar line with a '2' above it on the right.

D.S. al Coda

Musical notation for the fourth staff, featuring a drum set icon on the left.

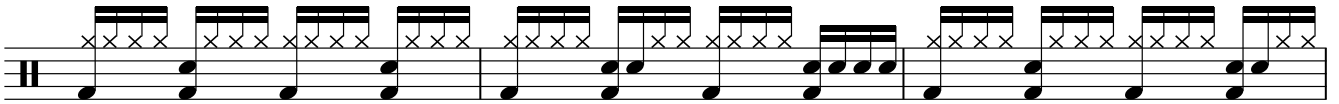
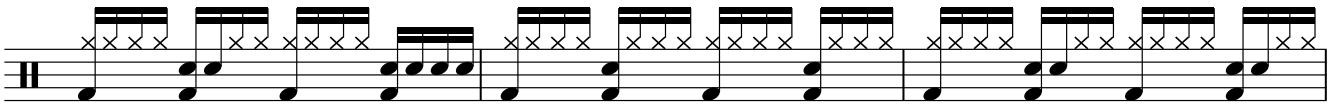
BRIDGE

Musical notation for the bridge section, featuring a drum set icon on the left.

Musical notation for the fifth staff, featuring a drum set icon on the left.

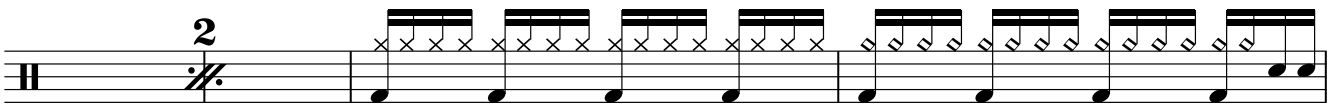
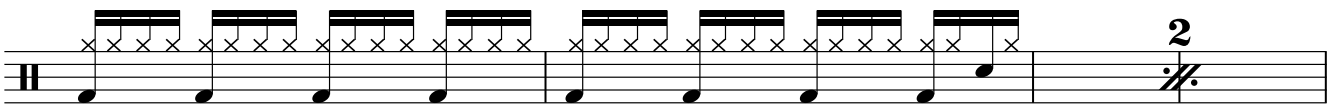
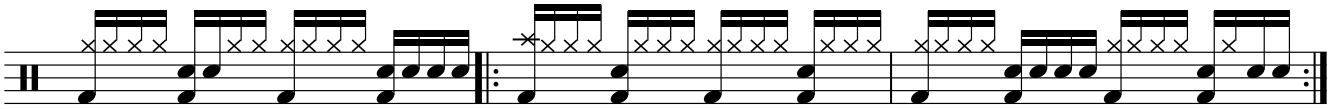
INST.

Musical notation for the sixth staff, featuring a drum set icon on the left.

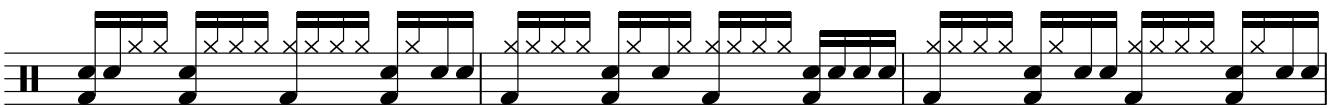


INTERLUDE Improv.

6X



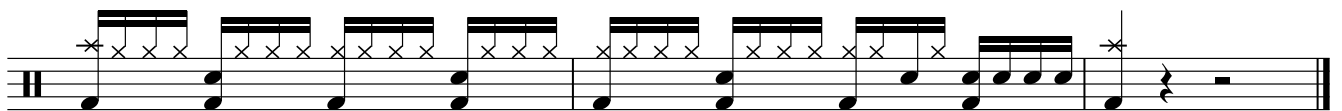
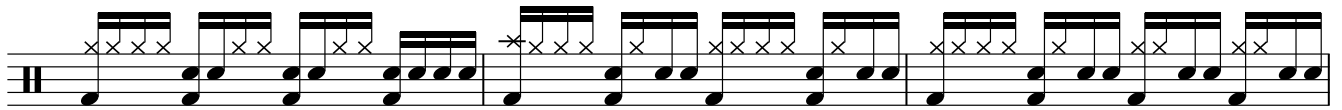
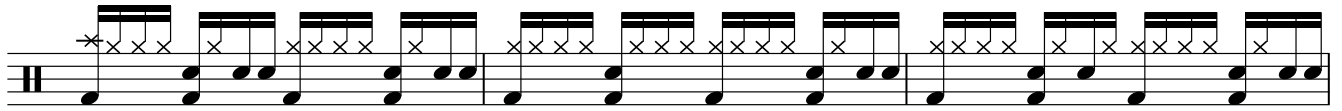
FIDDLE SOLO



OUTRO



4 SUNDAY BLOODY SUNDAY



Fine