

# CAN'T STOP

RED HOT CHILI PEPPERS

♩ = 90 INTRO

Drum notation for the Intro section. It consists of three staves. The first staff is in 4/4 time and features a continuous eighth-note pattern of snare and bass drum hits. The second and third staves continue this pattern, with the third staff including accents (>) over the eighth notes. The section concludes with a final snare hit and a quarter rest.

## VERSE

Drum notation for the Verse section. It consists of five staves. The first staff begins with a double bar line and a repeat sign. The notation features a consistent eighth-note pattern of snare and bass drum hits, with occasional accents (x) and circles (o) placed above specific notes. The section is divided into measures by repeat signs (/:).

## CHORUS

Drum notation for the Chorus section. It consists of a single staff showing a continuous eighth-note pattern of snare and bass drum hits, with accents (x) placed above the notes.

2 CANT STOP

Musical notation for the first staff, featuring a drum set icon and a first ending bracket labeled "1.".

Musical notation for the second staff, labeled "BRIDGE" and "2.", featuring a drum set icon.

Musical notation for the third staff, featuring a drum set icon.

Musical notation for the fourth staff, featuring a drum set icon.

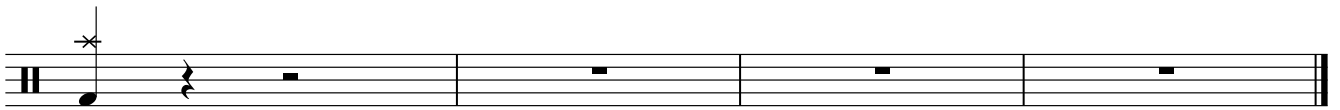
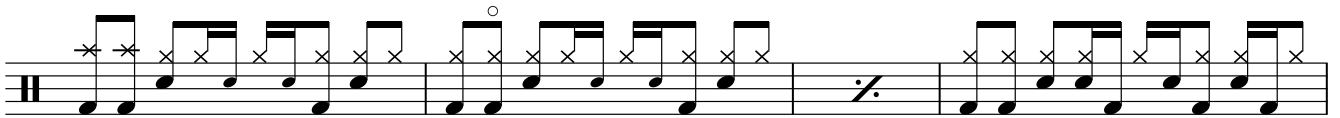
Musical notation for the fifth staff, featuring a drum set icon.

Musical notation for the sixth staff, featuring a drum set icon.

OUTRO

Musical notation for the seventh staff, labeled "OUTRO", featuring a drum set icon.

Musical notation for the eighth staff, labeled "N.C.", featuring a drum set icon.



Fine